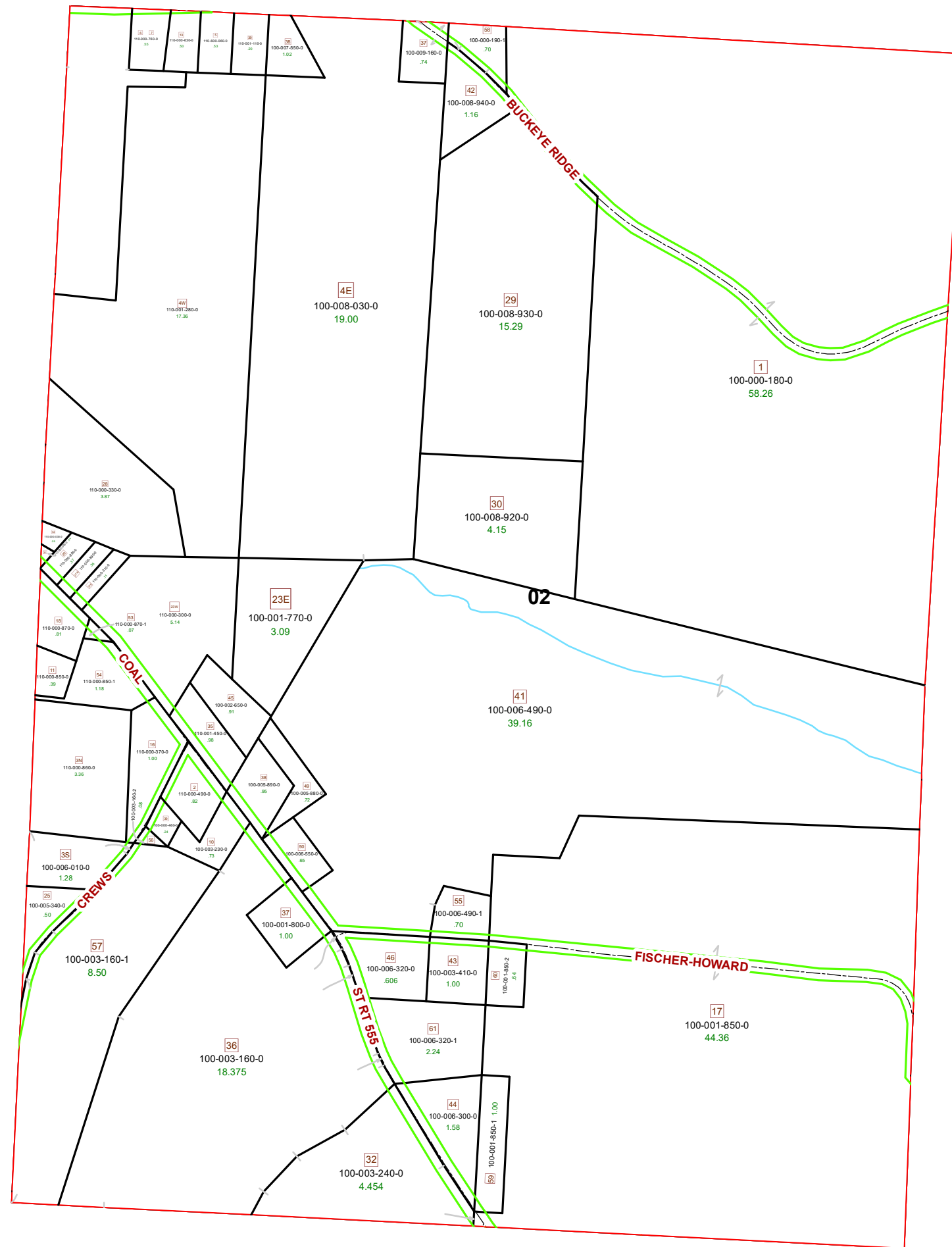


# MARION TOWNSHIP FRACTION 2 R12 TWP 8 MORGAN COUNTY, OH



PIN	Owner	VOL	PAGE	LegalDescr	Acres
U/I				TOWNSHIP CEMETERY	0
100-009-160-0	BAILEY CHARLES R JR	OR195	17	R12 T08 S00 FR 2 SD 37	0.747
110-600-060-0	BOARD OF TRUSTEES MARION TOWNSHIP	D.V 121	241	R12 T08 S00 SD 5	0.53
110-000-050-0	BOWMAN NORMA JEAN TOD-BOWMAN F	OR220	117	R12 T08 S00 FR 2 SD 31	0.04
110-000-030-0	BOWMAN NORMA JEAN TOD-BOWMAN F	OR220	117	R12 T08 S00 FR 2 SD 34	0.09
110-000-850-0	CHESTERHILL VOLUNTEER FIRE DEPARTM	D.V 198	75	R12 T08 S00 FR 2 SD 11	0.39
110-000-870-0	CHESTERHILL VOLUNTEER FIRE DEPARTM	D.V 198	75	R12 T08 S00 FR 2 SD 18	0.815
100-003-160-0	ELLIS MEREDITH H	OR232	3274	R12 T08 S00 FR 2 SD 36	18.375
100-001-800-0	ELLIS MEREDITH H & ARITA RAE	D.V 136	629	R12 T08 S00 FR 2 SD 37	1
100-001-850-0	FISCHER TIMOTHY P & CATHERINE K	OR210	2455	R12 T08 S00 FR 2 SD 17	44.36
110-000-300-0	FISCHER TRENT D	D.V 203	601	R12 T08 S00 FR 2 SD 23 P	5.145
110-000-310-0	FISCHER TRENT D	D.V 203	601	R12 T08 S00 FR 2 SD 27	0.11
110-000-330-0	FISCHER TRENT D	D.V 203	601	R12 T08 S00 FR 2 SD 28	3.87
100-001-770-0	FISCHER TRENT D	D.V 203	601	R12 T08 S00 FR 2 SD 23 P	3.09
100-006-320-0	FLEMING STEPHEN M	OR223	3062	R12 T08 S00 FR 2 SD 46	0.606
100-000-180-0	HERSHBERGER AARON J & SUSIE A	OR220	2055	R12 T08 S00 FR 2 SD 1 S	58.26
100-000-460-0	HILL ALISA L	OR74	19	R12 T08 S02 SD 39	0.24
110-000-490-0	HILL CAROLYN S	OR230	2849	R12 T08 S00 FR 2 SD 2 C	0.82
110-000-860-0	HILL CAROLYN S	OR230	2849	R12 T08 S00 FR 2 SD 3 N	3.368
110-000-850-1	HILL CAROLYN S	OR230	2849	R12 T08 S00 SD 54 FR 2	1.18
110-000-870-1	HILL CAROLYN S	OR230	2849	R12 T08 S00 SD 53 FR 2	0.078
100-006-010-0	HILL CAROLYN S	OR230	2849	R12 T08 S00 FR 2 SD 3 S	1.282
100-003-160-2	HILL JAMES L ET 5AL	OR25	185	R12 T08 S00 SD 56 FR 2	0.08
100-003-160-1	HILL JAMES L ET5AL	OR25	185	R12 T08 S00 FR 2 SD 57	8.505
100-003-230-0	HILL LISA L	OR62	196	R12 T08 S00 FR 2 SD 10-	0.732
100-003-410-0	HOWARD BEVERLY & JOHN	OR208	758	R12 T08 S00 FR 2 SD 43	1
100-006-490-1	HOWARD JOHN R & BEVERLY	OR208	758	R12 T08 S00 FR 2 SD 55	0.701
100-006-320-1	HOWARD JOHN R & BEVERLY A	OR204	288	R12 T08 S00 SD 61 FR 2	2.24
100-001-850-2	HOWARD JOHN R & BEVERLY A	OR202	2698	R12 T08 S00 SD 60 FR 2	0.64
100-006-490-0	LIPSCOMB RICHARD A & HEATHER L	OR209	782	R12 T08 S00 FR 2 SD 41	39.168
100-005-890-0	MAYLE CECIL M JR	OR14	80	R12 T08 S00 SD 38 FR 2	0.958
100-005-880-0	MAYLE CECIL M JR	OR14	80	R12 T08 S00 FR 2 SD 49	0.724
100-005-340-0	MAYLE STEPHEN E & BARBARA J	D.V 182	355	R12 T08 S00 SD 25 SURVI	0.5
110-000-370-0	MAYLE SYLVIA LADYNE ET5AL C/O CAR	OR135	237	R12 T08 S00 FR 2 SD 16	1
110-000-890-0	MYERS NELSON L & GLORIA J	D.V 206	316	R12 T08 S00 FR 2 SD 27	0.365
110-000-880-0	MYERS NELSON L & GLORIA J	D.V 206	316	R12 T08 S00 FR 2 SD 20-	0.37
100-003-240-0	NORRIS ANDREA L	OR204	3261	R12 T08 S00 FR 2 SD 32	4.18
100-006-300-0	NORRIS PATRICIA A	OR213	2574	R12 T08 S00 FR 2 SD 44	1.58
100-001-850-1	NORRIS PATRICIA A	OR213	2574	R12 T08 S00 SD 59 FR 2	1
100-008-920-0	PARSONS ALFRED L	OR219	3371	R12 T08 S00 FR 2 SD 30	4.15
100-008-930-0	PARSONS ALFRED L	OR219	3371	R12 T08 S00 FR 2 SD 29	15.29
100-008-940-0	PARSONS ALFRED L	OR25	326	R12 T08 S00 FR 2 SD 42	1.16
100-006-550-0	PARSONS CHARLENE S	OR197	536	R12 T08 S02 SD 50	0.659

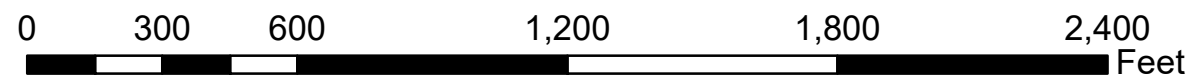


Boundaries	
----- Hidden	--- ROW
----- Hydro	--- Section
----- Roads	--- Township
----- County	--- Parcel
----- Lot	--- Parcels



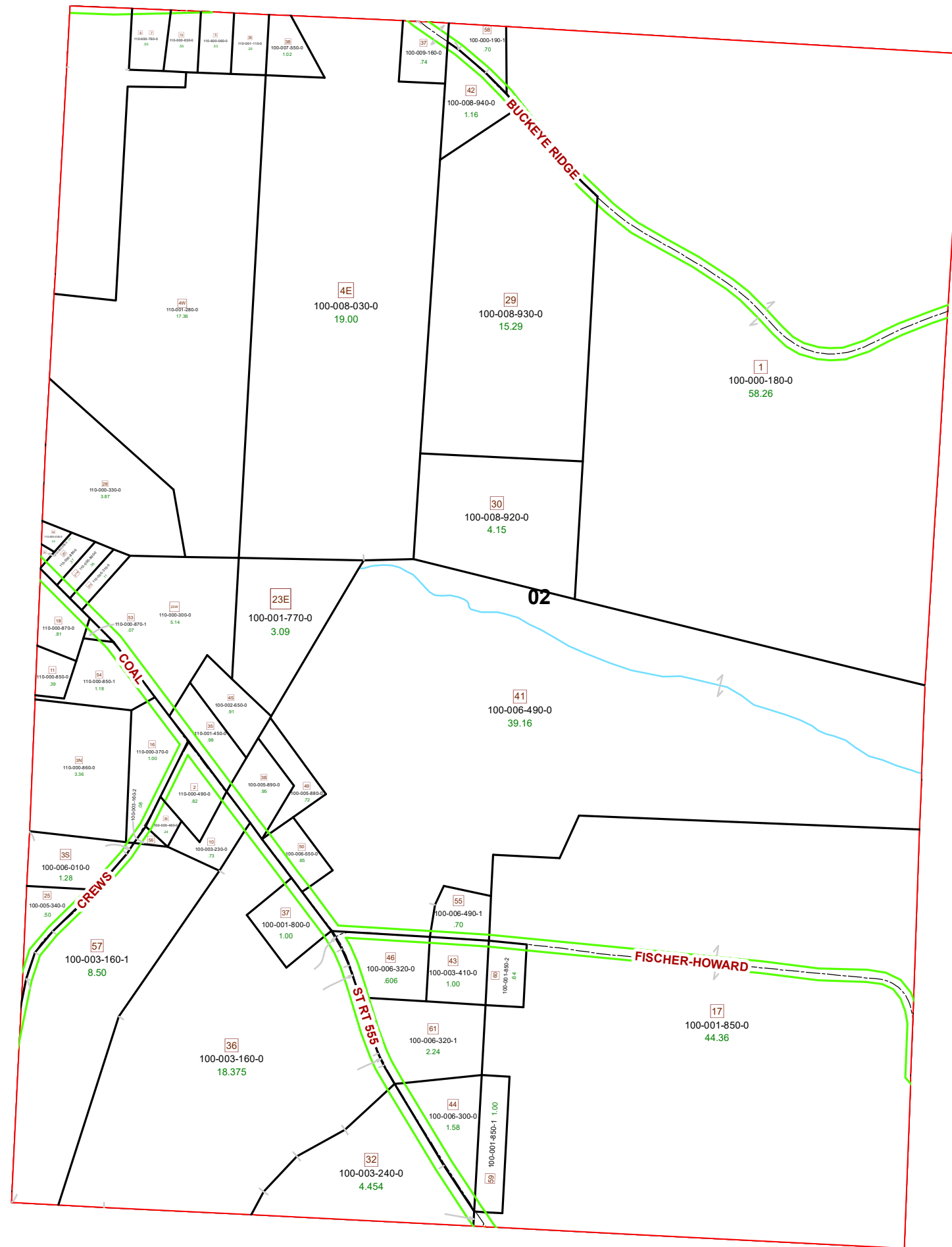
Disclaimer: The information that these maps contains is for reference purposes only. Please bring any errors to the attention of the Engineer's Office staff.

Thank you



# MARION TOWNSHIP FRACTION 2 R12 TWP 8 MORGAN COUNTY, OH

PIN	Owner	VOL	PAGE	LegalDescr	Acres
110-000-630-0	SEYFRIED MAX L & HELEN R	OR226	2904	R12 T08 S00 FR 2 SD 13	0.5
110-000-760-0	SEYFRIED MAX L & HELEN R	OR226	2904	R12 T08 S00 FR 2 SD 6-7	0.55
110-001-450-0	SHAW DYLAN W & MICHELLE O RUCKER	OR227	655	R12 T08 S00 FR 2 SD 35	0.98
100-002-650-0	SHAW DYLAN W & MICHELLE O RUCKER	OR227	655	R11 T08 S00 FR 2 SD 45	0.91
110-001-110-0	SMEDLEY TIMOTHY	D.V	163 143	R12 T08 S00 FR 2 SD 39	0.2
100-007-550-0	SMEDLEY TIMOTHY	D.V	163 143	R12 T08 S00 FR 2 SD 38	1.02
110-001-280-0	STARLING NANCY ANN TRUST STARLING	OR225	2364	R12 T08 S00 FR 2 SD 4 W	17.36
100-008-030-0	STARLING NANCY ANN TRUST STARLING	OR225	2364	R12 T08 S00 FR 2 SD 4	19
100-000-190-1	SUPER SOLUTIONS PROPERTIES, LLC	OR225	1883	R12 T08 S00 FR 2 SD 58	0.701



Boundaries	
----- Hidden	--- ROW
----- Hydro	--- Section
----- Roads	--- Township
----- County	--- Parcel
----- Lot	--- Parcels



Disclaimer: The information that these maps contains is for reference purposes only. Please bring any errors to the attention of the Engineer's Office staff.

Thank you

